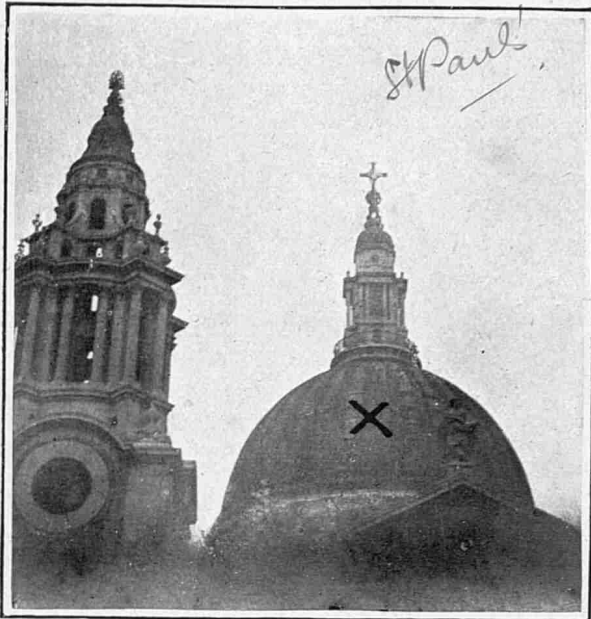


The Burning Question

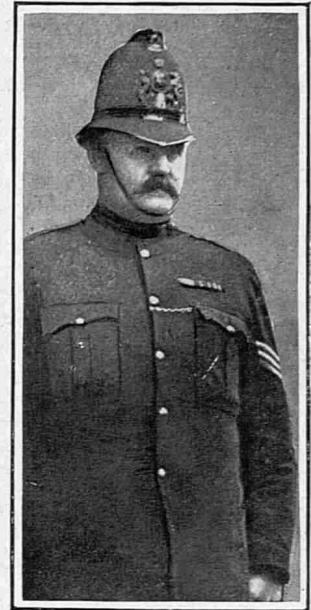
SUPPOSED SUFFRAGETTE OUTRAGES ILLUSTRATED AT ALL COSTS



Reproduced above will be found an interesting photograph of the dome of St. Paul's Cathedral (marked with a cross) which might have been blown off had the bomb, recently found there, exploded

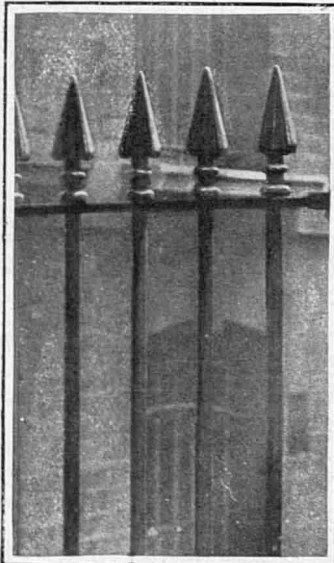


The Home Office expert who— at no risk of his life— examined the bomb found in St. Paul's

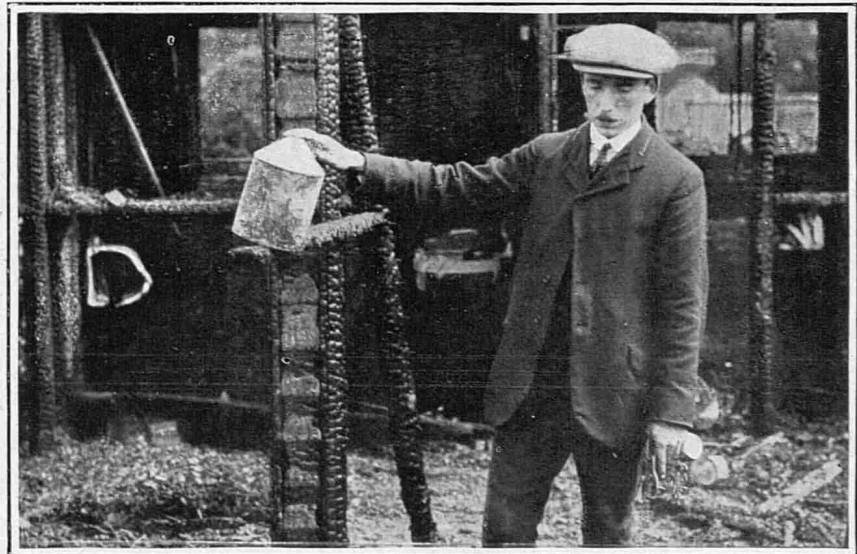


One of the constables present at the police station when the expert examined the bomb

5 Pol



The railings of Bridewell Police Station photographed immediately after the departure of the expert



The very latest portrait (we hope) taken of the Tin Can found in the wrecked Bowling Green Pavilion at Fulham—specially posed by an attendant for our photographer



The broom and pail, near which was found the Tin Can supposed to be vitally concerned in the Suffragette outrage at Fulham

It has long been recognised that the Press plays an important part in the detection of crime. It is therefore highly essential that photographs be obtained of everything and everybody connected, however remotely, with a crime. We reproduce above what we are led to believe is Damning Evidence against the Suffragettes in two recent outrages supposed to have been committed by them. We leave our readers to judge of its value for themselves